



MANIALTEPEC

# ALDEA LAGUNA

MEX  OAX

PUERTO ESCONDIDO

Join us in the exceptional new mountainside community overlooking Laguna de Manialtepec and the Pacific Ocean in Puerto Escondido.



## Discover Aldea Laguna

Only 25 minutes from Puerto Escondido towards the Manialtepec Lagoon, and far from the concentration and impact on the Oaxacan coast, Aldea Laguna offers an unprecedented way of life in Puerto Escondido.



## Our Community

- From \$139,990 USD
- 1, 2 and 4 BR
- From 573 sq ft to 2,152 sq ft
- Only two stories high
- Parking space
- Balcony and terrace
- Club house
- Starlink
- AC
- Ocean and lagoon view
- Gated community
- Property Management
- Salt water pools
- Gardens
- Biodigester system
- Waste management and composting
- Pet friendly
- Transportation

MANIALTEPEC  
ALDEA LAGUNA

MEX OAX  
PUERTO ESCONDIDO

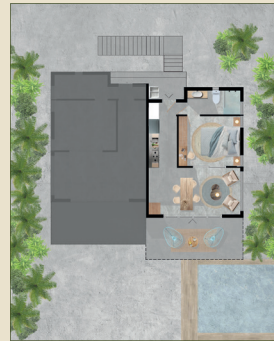
All interior and exterior areas are created for an active lifestyle. With units from one to four bedrooms, the low density of only two stories high, provides a feeling of spaciousness where the firmament becomes the only boundary. All our designs maximize the interior space while provide dramatic mountain and ocean views.



### Veranda I



Ground Floor



Second Floor

- Ground floor with terrace
- Second floor with balcony
- 1 BR
- 1 BA
- 1 Living room
- Kitchen
- 1 Parking space
- Shared pool
- Laundry area
- A/C: 38 m<sup>2</sup> / 409,03 sq ft
- Terrace/Balcony: 16,6 m<sup>2</sup> / 178,68 sq ft



### Veranda II



Ground Floor



Second Floor

- Ground floor with terrace
- Second floor with balcony
- 2 BR
- 2 BA
- 2 Living rooms
- 1 Kitchen
- 1 Kitchenette
- 1 Parking Space
- Shared pool
- Laundry area
- A/C: 76 m<sup>2</sup> / 818,06 sq ft
- Terrace: 33,2 m<sup>2</sup> / 357,36 sq ft
- Balcony: 33,2 m<sup>2</sup> / 357,36 sq ft



### Villa



Ground Floor



Second Floor

- 2 BR
- 2 BA
- 2 Living Rooms
- 1 Kitchen
- 2 Parking Spaces
- 1 Terrace
- 1 Balcony
- Laundry area
- Shared pool
- A/C: 76 m<sup>2</sup> / 818,06 sq ft
- Terrace: 16,06 m<sup>2</sup> / 178,68 sq ft
- Balcony: 16,06 m<sup>2</sup> / 178,68 sq ft



### Residencia



Ground Floor



Second Floor

- 4 BR
- 4 BA
- 2 Living rooms
- 1 Kitchen
- 4 Parking Spaces
- 2 Balconies
- 2 Terraces
- Shared pool
- Laundry area
- A/C: 152 m<sup>2</sup> / 1,636.12 sq ft
- Terrace: 33,2 m<sup>2</sup> / 357,36 sq ft
- Balcony: 33,2 m<sup>2</sup> / 357,36 sq ft

